



HARRY C. TREXLER TRUST

RE-IMAGINING  
HOW WE HELP  
EACH OTHER

ANNUAL REPORT 2021

*“... it has been this year – this disruptive pandemic year – during which we have seen an even greater level of charitable commitment to those of us most in need.”*



**T**he impressive amount of service to our community by nonprofit organizations annually has been clear throughout the Trexler Trust’s nearly 90 years of operation. However, it has been this year – this disruptive pandemic year – during which we have seen an even greater level of charitable commitment to those of us most in need.

In the face of this past year’s particularly severe challenges, the charitable institutions of Allentown and Lehigh County delivered extraordinary benefits using innovative means. The County’s charitable organizations re-imagined their approach to the delivery of services, and these charities – composed of deeply committed staff and volunteers – reframed their philanthropic visions to bring relief to many more people.

Organizations retooled their programs to deliver both familiar and new programs online. Technology connected mentors and mentees, young and elderly, students and teachers. Food pantries and soup kitchens offered to-go meals; the unexpectedly homebound received delivered meals and check-in phone calls. Summer camps went virtual, and adult learning moved online. In the pages that follow, you will see brief examples of only a few of these heroic efforts. We are certain that many more examples of philanthropic ingenuity contributed to this expanded level of service.

Our world and our community have changed so much as a result of the pandemic. We are pleased to focus on the many positive changes made by the resilient people of our community’s charitable organizations and are proud to have been a part of their essential efforts.

**J. Scott Pidcock**  
Chair





# FINANCIAL STATEMENTS

## Statement of Financial Position

	2021	2020
<i>Assets</i>		
Investments		
Mutual Funds	\$91,113,725.27	\$97,961,406.61
Alternative Investments	20,908,292.15	21,303,395.39
<b>Total Investments</b>	112,022,017.42	119,264,802.00
Cash	164,573.73	97,937.16
Other Non-Investment Assets	270,779.43	257,781.13
<b>Total Assets</b>	112,457,370.58	119,620,520.29

## Liabilities and Fund Balances

Liabilities	580,620.32	423,865.17
Fund Balances	111,876,750.26	119,196,655.12
<b>Total Liabilities and Fund Balances</b>	\$112,457,370.58	\$119,620,520.29

The figures contained in this report are compliant with accounting procedures for estates in Pennsylvania and provisions of the Will of Harry C. Trexler. **Asset values are shown at acquisition cost rather than market value.**



## Statement of Revenues and Expenses

	2021	2020
<i>Revenues</i>		
Dividends and Interest	\$1,353,885.77	\$1,993,729.59
Realized Capital Gains (Losses)	(2,046,922.92)	1,712,432.34
Other	0.00	0.00
<b>Total Revenues</b>	(693,037.15)	3,706,161.93
<i>Expenses</i>		
Administrative and General	729,883.02	579,006.00
Professional Services	114,103.16	124,107.33
City of Allentown Park Studies	24,034.59	254,291.76
Homelessness: 100-Day Challenge, Housing Study	8,908.79	5,735.24
Occupancy	44,640.15	29,913.48
Insurance	7,403.00	7,534.00
Excise Tax	0.00	43,512.24
<b>Total Administrative Expenses</b>	928,972.71	1,044,100.05
<b>Excess of Revenues Over Expenses Before Grants</b>	(1,622,009.86)	2,662,061.88
<b>Grants</b>	5,697,895.00	5,713,750.00
<b>Excess (Deficit) of Revenues Over Expenses After Grants</b>	(7,319,904.86)	(3,051,688.12)
<b>Increase (Decrease) in Net Assets</b>	(7,319,904.86)	(3,051,688.12)
<b>Fund Balances - Beginning of Year</b>	119,196,655.12	122,248,343.24
<b>Fund Balances - End of Year</b>	\$111,876,750.26	\$119,196,655.12

# DISTRIBUTION TO BENEFICIARIES

Even for people who ordinarily crave silence, the pandemic brought too much silence. The Allentown Band and Allentown Symphony Orchestra quickly provided music to soothe souls. The band offered up its extensive library of performances, while the symphony created MillerSymphonyHall@Home, streaming a variety of musical treats.



<i>Allentown Area Ecumenical Food Bank</i>	underwrite operating expenses for the food pantry.....	\$60,000.00
<i>Allentown Art Museum</i>	operating support to mitigate challenges due to the COVID-19 pandemic; program development and community engagement.....	\$200,000.00
<i>Allentown Band, Inc. (The)</i>	operating support.....	\$5,000.00
<i>Allentown Central Catholic High School, Inc.</i>	underwrite scholarships for incoming minority students enrolled in the Allentown School District from low-income families.....	\$45,000.00
<i>Allentown Public Library</i>	underwrite operating expenses.....	\$75,000.00
<i>Allentown School District Foundation</i>	underwrite the installation of a theatre lighting system at Dieruff High School.....	\$40,000.00
<i>Allentown Symphony Association, Inc.</i>	operating support.....	\$75,000.00
<i>Allentown Youth Soccer Club</i>	underwrite equipment costs for low-income children.....	\$6,000.00
<i>Allentown, City of</i>	improvements, extension, and maintenance of all its parks.....	\$1,996,561.50
<i>Animal Food Bank Services, Inc.</i>	purchase, transport, and store pet food for distribution to elders, the disabled, and low-income Lehigh County residents.....	\$5,000.00

<i>Baum School of Art (The)</i>	support general operating expenses.....	\$110,000.00
<i>Big Brothers Big Sisters of the Lehigh Valley, Inc.</i>	operating support to expand the community-based mentoring program in Lehigh County .....	\$15,000.00
<i>Boys and Girls Club of Allentown</i>	underwrite educational programming and operating expenses.....	\$83,000.00
<i>Bradbury-Sullivan LGBT Community Center</i>	support programming for Lehigh County residents .....	\$30,000.00
<i>Burnside Plantation, Inc.</i>	underwrite expenses for Lehigh County family programming.....	\$7,500.00
<i>Camelot for Children, Inc.</i>	operating support.....	\$5,000.00
<i>Cancer Support Community of the Greater Lehigh Valley</i>	program support.....	\$4,000.00
<i>Casa Guadalupe Center</i>	toward operating costs .....	\$75,000.00
<i>Casa Guadalupe Center</i>	support the Pa'Lante Education Program for students K-12.....	\$97,000.00
<i>Catholic Charities of the Diocese of Allentown, Inc.</i>	underwrite operating expenses for community support services.....	\$60,000.00
<i>Cedar Crest College</i>	purchase instructional equipment or for the benefit of needy Lehigh County students.....	\$50,000.00
<i>Center for Humanistic Change, Inc.</i>	support programming in the Allentown School District.....	\$5,000.00
<i>Civic Theatre of Allentown</i>	operating support.....	\$50,000.00





*Communities In Schools of Eastern Pennsylvania*  
 underwrite operating expenses to deliver programs  
 in the Allentown School District..... \$150,000.00

*Community Action Development Corporation of the Lehigh Valley*  
 underwrite youth programming in the Neighborhood Partnership  
 Program area ..... \$15,000.00

*Community Action Development Corporation of the Lehigh Valley*  
 underwrite operating expenses for the  
 Sixth Street Shelter..... \$20,000.00

*Community Action Development Corporation of the Lehigh Valley*  
 program support for the Seed Farm to  
 benefit Lehigh County residents..... \$30,000.00

*Community Bike Works*  
 underwrite operating expenses for Allentown  
 and Lehigh County programs..... \$75,000.00

*Community Music School*  
 underwrite operating expenses related to services  
 and programs for Lehigh County residents..... \$50,000.00

*Community Services for Children, Inc.*  
 support the Artist and Scientist in Residence  
 program for Allentown children..... \$35,000.00

*Coplay Public Library*  
 operating support and computer  
 security enhancement..... \$10,823.00

*Coplay, Borough of*  
 renovate the playground and tot lot and  
 install new equipment..... \$4,000.00

*Communities In Schools moved  
 outside of school buildings into  
 neighborhoods. Porch visits were  
 made to struggling students and  
 their families. Keeping true to its  
 mission, Communities In Schools  
 kept connecting students to the  
 learning environment.*

*Geographically distant families  
 were delighted to virtually attend  
 music recitals. Community Music  
 School live-streamed student recitals,  
 creating new access points so that  
 families could enjoy the talents of  
 their loved ones – safely.*



*Da Vinci Discovery Center of Science and Technology, Inc. (The)*  
 operating support..... \$50,000.00

*Da Vinci Discovery Center of Science and Technology, Inc. (The)*  
 first installment on a five-year pledge of \$500,000 to  
 support the Allentown Expansion Project..... \$100,000.00

*DeSales University*  
 scholarship support for needy Lehigh County students..... \$25,000.00

*Easterseals Eastern Pennsylvania*  
 underwrite developmental evaluations of Lehigh  
 County children and training for their parents..... \$10,000.00

*Emmaus Historical Society*  
 underwrite operating expenses..... \$2,500.00

*Emmaus Public Library*  
 underwrite improvements to the  
 adult area of the library..... \$20,000.00

*Everlasting Life Ministries*  
 underwrite operating costs of services  
 for Lehigh County residents..... \$35,000.00

*Family Promise of the Lehigh Valley*  
 underwrite services for homeless  
 Lehigh County families..... \$10,000.00

*Flint Hill Farm Educational Center, Inc.*  
 underwrite educational programming for  
 Allentown School District children..... \$5,000.00

*Friends of the Allentown Parks*  
 underwrite a parks beautification  
 program using volunteers..... \$5,000.00

*Fund to Benefit Children & Youth, Inc.*  
 underwrite the purchase of basic household  
 items and clothing for low-income Lehigh  
 County families with children ..... \$5,000.00

*Grace Community Foundation*  
 underwrite operating and food  
 expenses for the pantry..... \$30,000.00



*The excitement of learning was  
 sparked in new ways. The Da Vinci  
 Science Center created and distributed  
 science kits to educate and entertain  
 children at home.*



*The Allentown YMCA, Jewish Community Center, Neighborhood Center, and Salvation Army provided school children with safe, monitored access to online education. These virtual schooling programs created places for socially distant learning and oversight. And they offered alternatives to staying at home every day.*

<b>Grace Montessori School</b> underwrite scholarships for low-income students residing in Allentown .....	\$12,000.00
<b>Greater Valley YMCA</b> capital improvements.....	\$75,000.00
<b>Greater Valley YMCA</b> operating support for the Allentown YMCA .....	\$175,000.00
<b>Guardianship Support Agency, Inc.</b> underwrite operating expenses to assist decision-impaired Lehigh County residents.....	\$12,000.00
<b>Habitat for Humanity of the Lehigh Valley</b> underwrite the Home Repair Program to keep low-income Allentown residents in their homes .....	\$100,000.00
<b>Haven House</b> underwrite the renovation of space to create a food pantry.....	\$30,000.00
<b>Historic Catasauqua Preservation Association</b> underwrite the cost of repainting the mule barn.....	\$10,000.00
<b>Housing Association and Development Corporation</b> toward the development of a secured storage area for construction vehicles and equipment.....	\$35,000.00



<b>Jerusalem House Ministries</b> underwrite expenses to serve the needs of the poor in the neighborhood.....	\$50,000.00
<b>Jewish Community Center of the Lehigh Valley</b> underwrite the renovation of the Early Childhood Education classrooms .....	\$20,000.00
<b>Jewish Community Center of the Lehigh Valley</b> underwrite operating expenses.....	\$85,000.00
<b>Jewish Family Service of the Lehigh Valley</b> program support for services to Lehigh County residents.....	\$50,000.00
<b>KidsPeace Corporation</b> program support for the Allentown Green Street outpatient clinic.....	\$10,000.00
<b>Lehigh Carbon Community College Foundation</b> for student aid, technology, and other challenges related to COVID-19.....	\$50,000.00
<b>Lehigh Conference of Churches</b> underwrite operating expenses for Lehigh County services .....	\$90,000.00
<b>Lehigh County Historical Society</b> toward operating support .....	\$60,000.00
<b>Lehigh County Humane Society</b> underwrite the shelter renovation and expansion project .....	\$10,000.00

*Closed classrooms couldn't keep Lehigh Carbon Community College from providing pandemic relief. Not only did the college assist students by helping them with online tools, but the college also donated essential healthcare supplies from its classrooms to local healthcare providers fighting COVID-19.*

*Instead of decreasing services, the Lehigh Conference of Churches extended their limited resources and expanded services to a larger client base. Helping more people than ever, the Conference fed greater numbers and provided more housing and case management services.*





Active elders and their homebound peers found themselves alone without basic needs being met. Both Lehigh Valley Active Life (Lehigh County Senior Citizens) and Jewish Family Service organized new ways to reach out to quell the loneliness and deliver necessities.

At-home adults engaged in new classes on working from home and learned about finding work-from-home jobs. The Literacy Center kept learning on track, while the YWCA offered ingenious resources to keep moving forward.



**Lehigh County Senior Citizens, Inc.**  
support educational programs, food delivery, and wellness visits for Lehigh County elders..... \$25,000.00

**Lehigh Valley Arts Council**  
underwrite operating expenses for Lehigh County services provided by the Lehigh Valley Arts & Cultural Alliance..... \$10,000.00

**Lehigh Valley Center for Independent Living, Inc.**  
operating support for services to Lehigh County residents..... \$30,000.00

**Lehigh Valley Children's Centers, Inc.**  
renovation costs of the Whitehall outdoor play area ..... \$20,000.00

**Lehigh Valley Military Affairs Council**  
underwrite operating and program expenses to support the recovery of homeless veterans in Lehigh County ..... \$5,000.00

**Liberty Bell Shrine of Allentown, Inc.**  
underwrite the cost of educational programming for Allentown School District students..... \$15,000.00

**Literacy Center (The)**  
operating and program support for services to Lehigh County residents..... \$75,000.00

**Macungie Band**  
toward operating costs..... \$1,000.00

**Manito Life Center**  
support equine-based therapy programs for at-risk Lehigh County youth..... \$35,000.00

**Mercy School for Special Learning**  
operating support for Lehigh County students..... \$55,000.00

**Miracle League of the Lehigh Valley (The)**  
program support and expansion of the parking lot..... \$5,000.00

**Mosser Village Family Center, Inc.**  
underwrite the costs of the food pantry..... \$7,500.00

**Muhlenberg College**  
support of the internship program in Allentown ..... \$40,000.00

**Municipal Band of Allentown (The)**  
underwrite operating support and concerts in Allentown..... \$1,000.00

**Neighborhood Center, The**  
underwrite operating costs ..... \$45,000.00

**Northern Lehigh Recreation Authority**  
program support for a children's summer camp for Lehigh County residents..... \$10,000.00

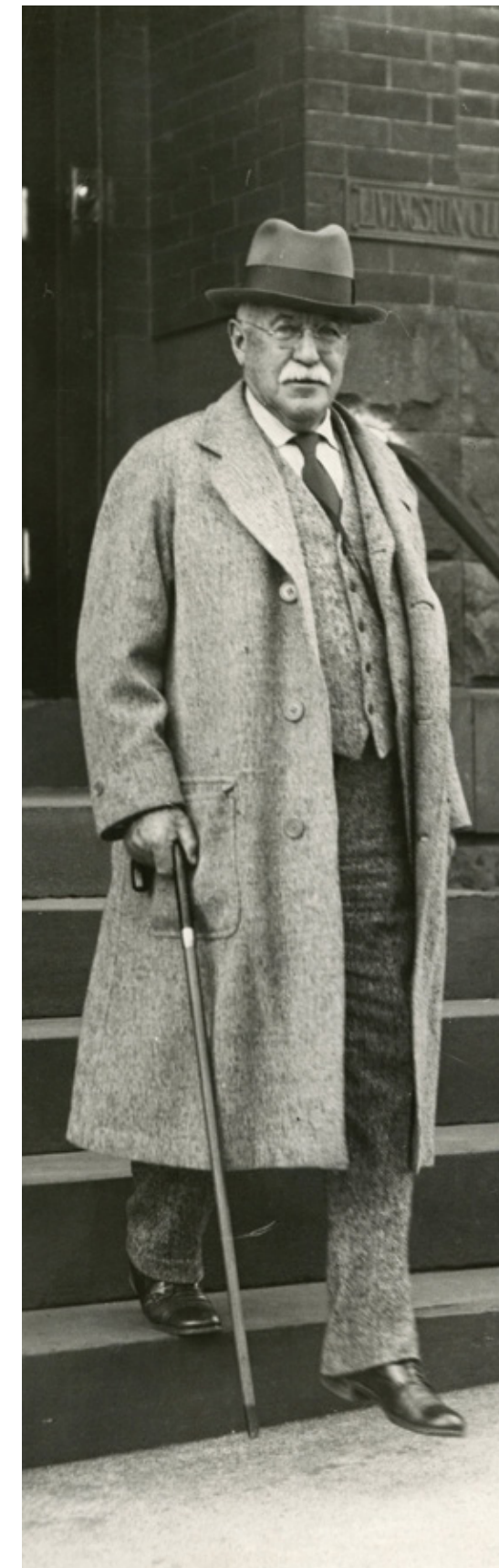
**Old Allentown Preservation Association, Inc.**  
underwrite the trees of the streetscaping program ..... \$5,000.00

**Pennsylvania Shakespeare Festival (The)**  
operating support for the WillPower program in low-income Lehigh County schools..... \$25,000.00

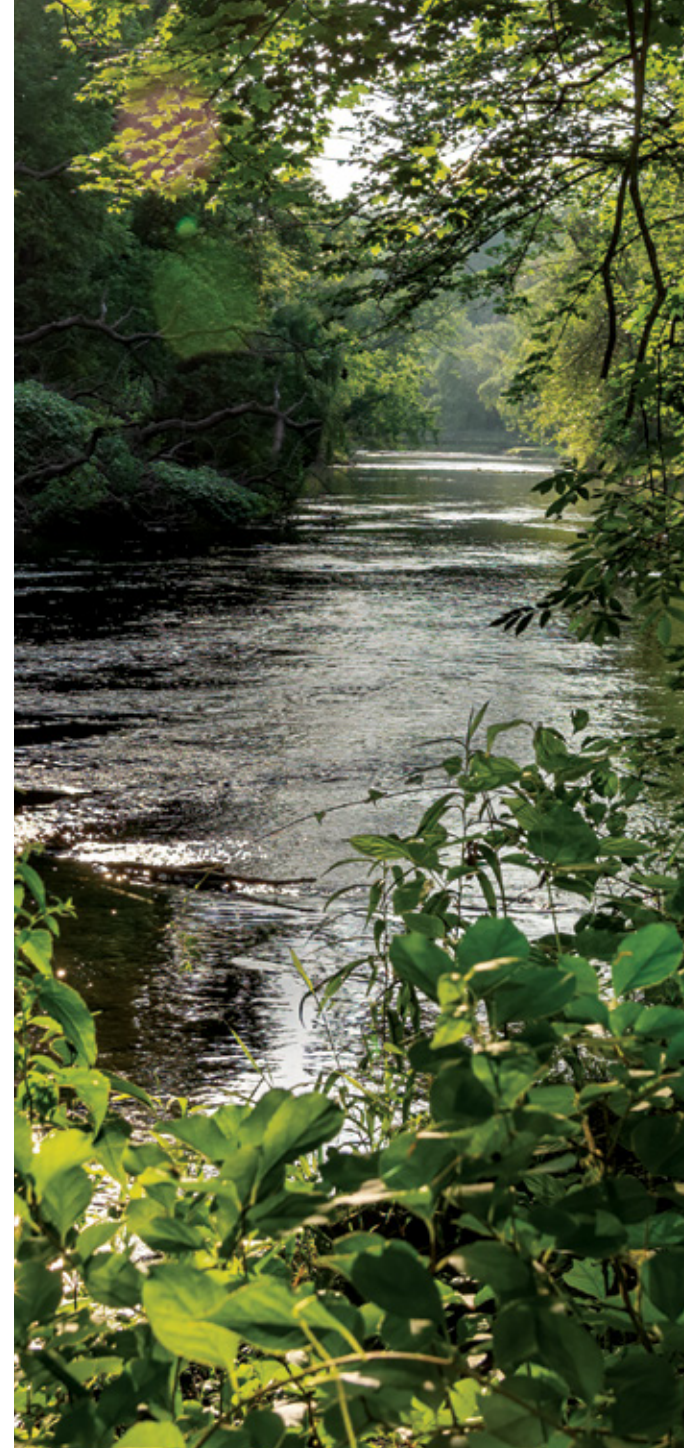
**Pennsylvania Sinfonia Orchestra**  
program support..... \$15,000.00

**Pinebrook Family Answers**  
underwrite operating expenses for services to Lehigh County residents..... \$108,000.00

**Pioneer Band of Allentown, Inc.**  
underwrite operating expenses and concerts performed in Lehigh County..... \$1,000.00



<b>Pratyush Sinha Foundation</b> underwrite programs in the Allentown School District.....	\$6,000.00
<b>Promise Neighborhoods of Lehigh Valley</b> underwrite expenses to develop a corps of volunteers for Allentown.....	\$75,800.00
<b>Public Library of Catasauqua</b> underwrite the installation of a custom-framed LED sign with masonry base.....	\$20,000.00
<b>Repertory Dance Theatre</b> underwrite educational outreach programs for children of the Allentown School District .....	\$12,000.00
<b>Ripple Community Inc.</b> underwrite operating expenses for services to Lehigh County residents.....	\$125,000.00
<b>Sacred Heart Hospital of Allentown</b> support the Faith-Based Nursing Program in Allentown.....	\$100,000.00
<b>Salvation Army (The)</b> support the Allentown Corps' operating expenses.....	\$183,000.00
<b>SATORI Ltd.</b> support Lehigh County performances and educational initiatives for the 2021-2022 season.....	\$2,500.00

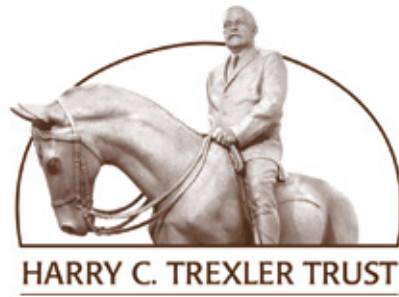


<b>Sights for Hope</b> support vision rehabilitation services for Lehigh County residents.....	\$12,000.00
<b>Slatington Public Library</b> building repairs.....	\$14,000.00
<b>Treatment Trends, Inc.</b> underwrite operating costs for the Allentown Center for Recovery for Lehigh County residents.....	\$3,500.00
<b>Union and West End Cemetery Association</b> underwrite operating expenses.....	\$10,000.00
<b>Via of the Lehigh Valley, Inc.</b> underwrite Community Employment Services for disabled Lehigh County residents.....	\$20,000.00
<b>Wildlands Conservancy, Inc.</b> underwrite pursuit of actions recommended by the 2020 Report on Environmental Education in the City of Allentown.....	\$12,500.00
<b>Wildlands Conservancy, Inc.</b> establish a Visitors Center at the Dorothy Rider Pool Wildlife Sanctuary.....	\$25,000.00
<b>Wildlands Conservancy, Inc.</b> continue implementation of the Jordan Creek Greenway development, particularly in Allentown.....	\$50,000.00
<b>Wildlife Information Center</b> operating support for services to Lehigh County residents.....	\$25,000.00
<b>Young Women's Christian Association</b> underwrite operating expenses for services to Lehigh County residents.....	\$75,000.00
<b>Zion's Reformed United Church of Christ</b> underwrite operating expenses of Jubilee Breakfast Ministry to serve the homeless.....	\$10,000.00



*Not only did they encourage getting outside, but the Wildlands Conservancy and Lehigh Gap Nature Center (Wildlife Information Center) both brought the outdoors in. Short, entertaining nature videos connected children and families to the environment. Virtual summer camp engaged youth and families as they explored the natural world around them.*





## TESTAMENTARY TRUSTEES

	<i>Term</i>
<i>Nolan P. Benner</i>	1934-1980
<i>Victor E. Fritz</i>	1951-1963
<i>Granville J. Heintzleman</i>	1934-1940
<i>J. Thomas Schantz</i>	1934-1951
<i>George F. Seiberling</i>	1934-1945
<i>John C. Shumberger Sr.</i>	1945-1958
<i>Joseph S. Young</i>	1934-1985

## APPOINTED TRUSTEES

<i>William B. Butz</i>	1940-1986
<i>Elmer H. Bausch</i>	1958-1964
<i>Carl J.W. Hessinger</i>	1963-2001
<i>Richard K. White</i>	1964-2000
<i>Dexter F. Baker</i>	1982-2006
<i>Kathryn Stephanoff</i>	1985-2010
<i>Philip I. Berman</i>	1987-1997
<i>Daniel G. Gambet</i>	1997-2017
<i>Malcolm J. Gross</i>	2000-2020
<i>Robert C. Wood</i>	2002-2011
<i>William F. Greenawald</i>	2007-2008
<i>Barnet H. Fraenkel</i>	2008-
<i>Jamie P. Musselman</i>	2010-
<i>L. Charles Marcon</i>	2012-
<i>J. Scott Pidcock</i>	2017-
<i>Donald M. Bernhard</i>	2020-

## STAFF

*Erika L. Chomka* - Administration and Operations Manager

*Lisa M. Curran* - Program Officer

*Janet E. Roth* - Executive Director